

ASSEMBLING INSTRUCTIONS, EDGE MODULAR STORAGE

1. START BY DECIDING WHERE YOU WANT THE “PUSH TO OPEN” FUNCTION

Each module features what is known as “push to open” functionality. This means that you simply need to push the door to open it. For this to work as well as possible, it is essential that you locate the function in the area of the module door you usually push to open it. On your Edge module, there is a “PUSH TO OPEN” label to indicate where the function was pre-installed at the factory.



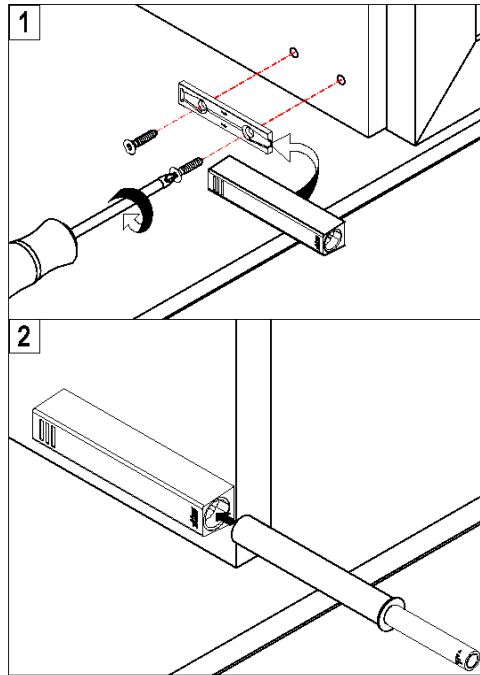
- a. Place the modules directly on the floor in the same order you subsequently wish to assemble them. Check that the doors open in the right direction.
- b. If they do so, go to “2. ASSEMBLE TWO OR MORE MODULES”.

If the doors do not open in the desired direction, see item c below.

If the doors open in the desired direction, but the “push to open” point is too high or too low, go to item d.

- c. If the door opens in the wrong direction.

Turn the cabinet upside down so that the door opens in the correct direction. It is now likely that the “push to open” point will be too high or too low. In that case, use a screwdriver to loosen the “push to open” device and place it in the appropriate corner.



- d. Moving the “push to open” function.

Open the cabinet, use a screwdriver to loosen the “push to open” device and place it in the appropriate corner.

2. ASSEMBLING TWO OR MORE MODULES

NB! If you want to install several modules at the same height, the first thing to do is to fit the leg sections.

- a. Start by turning all the modules that will be in the bottom row upside down.
Hint! It is a good idea to mark which side is up on the back panels of the modules to make sure that none of the modules is installed incorrectly.
- b. Position two of the modules so that they are exactly in line, corner to corner. It is a good idea to secure them in place so that they do not move while you are drilling holes and fixing them together.



- c. Drill holes (5 mm drill bit) and then screw the modules together. If you have a drawer module, you will have to take the drawers out first. Modules with doors can be easier to assemble if you temporarily remove the door(s).
- d. All modules are prepared for drilling. See the picture below to identify the hole you need to use for precisely the modules you will be drilling. Drill all four holes in accordance with the instructions.





- e. Push one part of the connection screw through the hole and screw on the other part from the other side. Tighten firmly.

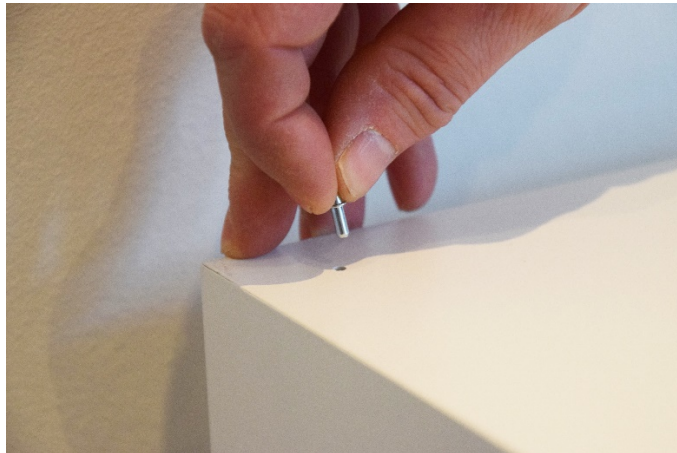


- f. Repeat the procedure if you are fitting multiple modules in a row.
- g. If you want to install multiple modules one on top of another, we recommend that you start by fitting the leg sections to the modules in the bottom row before placing the other modules on top of them.

3. INSTALLING MODULES AT THE SAME HEIGHT

NB! If you want to install multiple modules one on top of another, we recommend that you start by fitting the leg sections to the modules in the bottom row before placing the other modules on top of them.

- a. Turn them the right way up so that the bottom row of modules is correctly fitted to the leg sections.
- b. Put pins in all the pre-drilled holes in the modules used in the bottom row.



- c. Carefully position the module or modules that are to make up the next row.



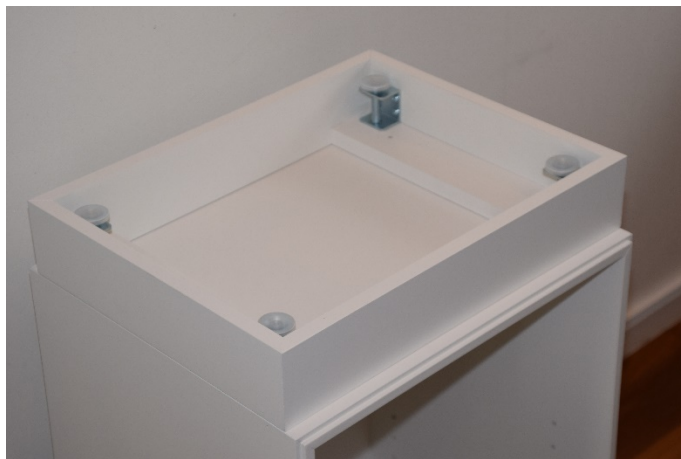
- d. Then fix the modules in the upper row so that they are perfectly in line with each other.



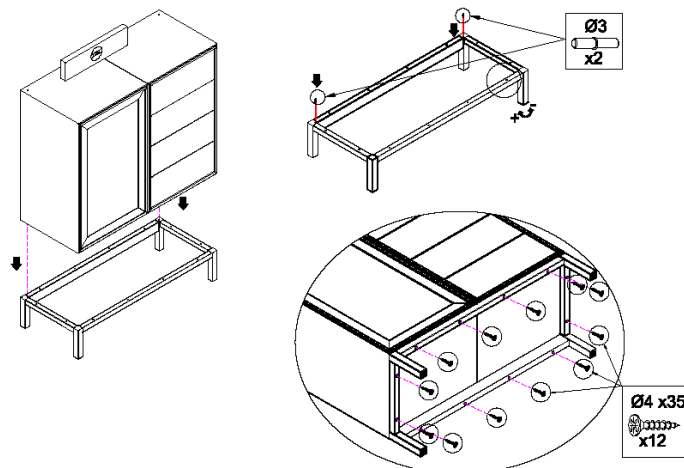
- e. Follow the instructions in **item 2C** until you have installed all the modules.

4. FITTING TO THE LEG SECTION

- a. Put pins in two of the four pre-drilled holes on the upper side of the leg section/socle so that they match the pre-drilled holes in the bottom panel of the module.
- b. Place the leg section/socle on the upside-down module(s).



- c. Fix the leg section/socle in place by screwing the wood screws supplied through the holes in the leg section/socle.



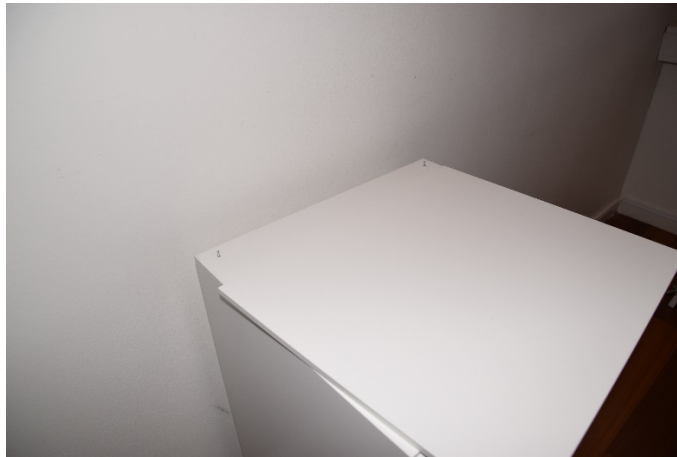
- d. Turn the module the right way up.

NB! Don't forget to adjust the leg section/socle if necessary – i.e. if the floor where the module is to stand is not completely level. To do this, screw the adjustable feet up or down.

NB! If you want to install several modules at the same height, see **item 3** in the instructions.

5. FITTING THE TOP BOARD

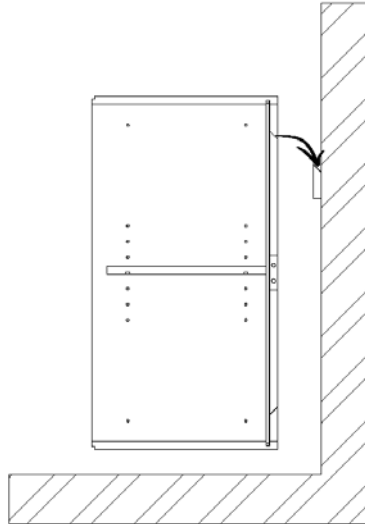
- a. All modules have now been assembled and positioned on the leg section. If a top board was supplied, it is now time to fit it in position.
- b. Put pins in two of the four pre-drilled holes on the underside of the top board so that they match the pre-drilled holes in the top panel(s) of the upper module(s).



- c. Place the top board on top of the upper module(s) so that the pins slide into the pre-drilled holes in the module(s).

6. WALL-MOUNTING

NB! The plugs and screws supplied with the module(s) are suitable for use in concrete walls. If you want to install the module(s) on a different type of wall, you will need to use different plugs and screws that match the type of wall and module weight.

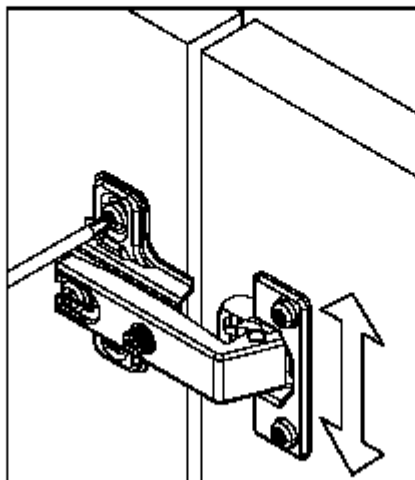
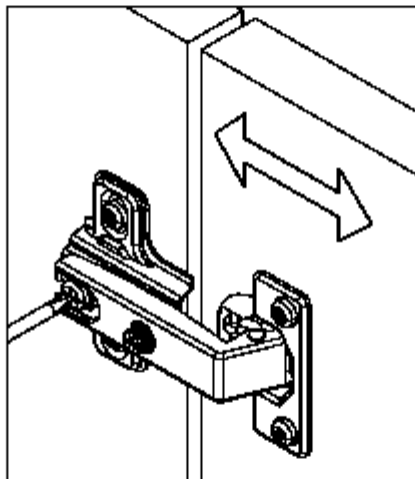
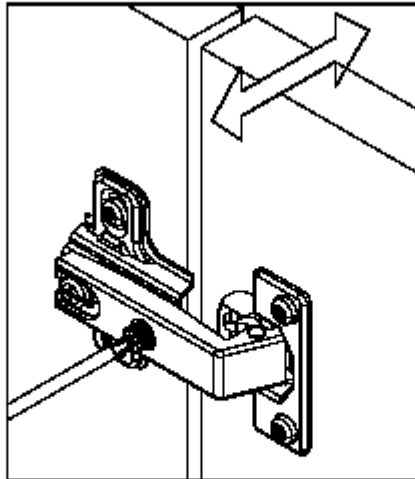


- The wall bracket is narrower than the module. The reason for this is to allow you to adjust the position of the module sideways after installation. Therefore, fit the wall bracket in the centre of the module width. You can then adjust the position of the module to the left or right if required.
- Position the bottom edge of the wall bracket 14 cm (+ 1 cm if you are using a top board) below the desired module height.
- Place the wall bracket in the centre of the module's horizontal position. Use a spirit level to make sure that the bracket is perfectly horizontal. Use a sharp object to mark where to drill.
- Drill holes in the wall, press in the plugs and secure the wall bracket in place with the angled top edge facing in towards the wall.
- Hang the module carefully on the wall bracket. You can then adjust its position to either side by sliding the module along the bracket.

NB! Don't forget that the module is not actually secured to the bracket – it is simply suspended from it with its own weight keeping it in place.

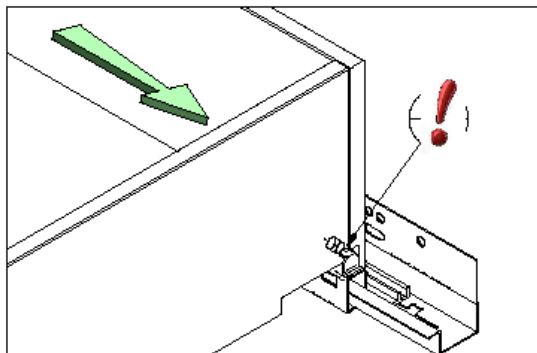
7. ADJUSTING

- a. Adjusting and assembling/re-assembling of doors.

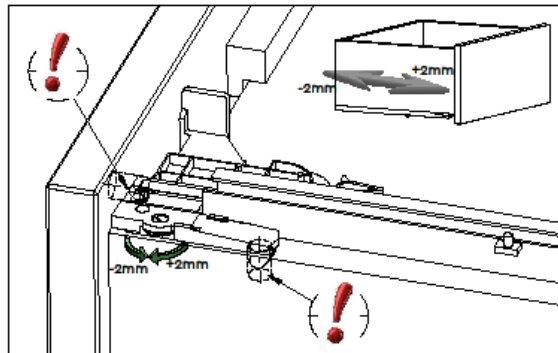


b. Adjusting and assembling/re-assembling of drawers.

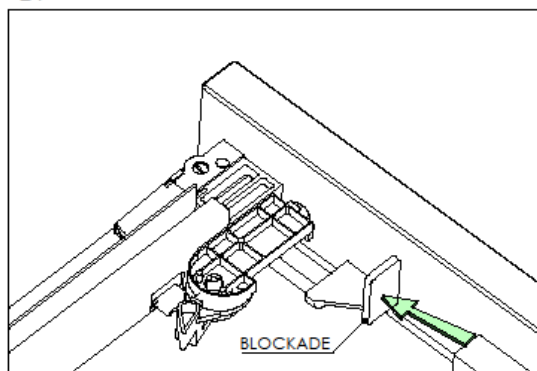
1.



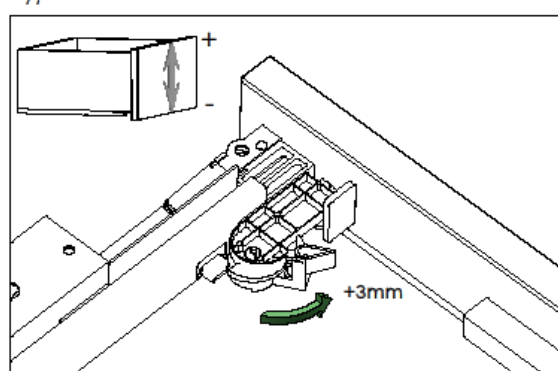
2.



3.



4.





Englesson Sverige AB, Östbergavägen 16, S-182 62 Djursholm, Sweden
Tel +46 (0)8 753 07 80, fax +46 (0)8 755 84 52
info@englesson.com, www.englesson.se